


# APOS 2026

23rd Annual Conference

Program Book



*New Orleans* 

Harmony of Healing: Elevating Patient, Family, & Community  
Voices in Psychosocial Oncology

# Welcome!



Charles Kamen, PhD  
**APOS PRESIDENT**

I am excited to be kicking off this year's APOS conference, and deeply grateful to be standing with all of you as part of the APOS community. As we gather in a world still shaped by uncertainty and rapid change, I want to reaffirm our shared commitment to the APOS mission: advancing equitable, evidence-based psychosocial oncology care through research, practice, education, and advocacy. Our vision of a nation in which every person affected by cancer has access to high-quality psychosocial care continues to guide everything we do.

Our 2026 conference theme, *Harmony of Healing: Elevating Patient, Family, and Community Voices in Psychosocial Oncology*, is appropriate on many levels. First, we are gathering in New Orleans, a city shaped by its musical history. While you're here, I hope you take the time to experience a jazz performance or walk around and see the city's many musical landmarks. (Also, aside from music, definitely consider joining our True Crime Pub Crawl on Tuesday night or a ghost tour if you have time!) But the idea of a harmony of healing is significant to APOS as well. We need to hear the voices of patients, caregivers, mental health professionals, medical professionals, researchers, and community advocates, especially those from historically marginalized communities, all sounding together in order to advance our Society's mission and achieve our vision.

I chose the presidential theme *Growing Stronger Together* very intentionally this year. During our 2025 conference in Pittsburgh, I heard from many of you in the APOS community that you felt a critical next step for APOS was to partner in intentional and bidirectional ways with sister organizations in the oncology and mental health spaces. I took this charge seriously. Over the course of the prior year, we have forged new, renewed, or strengthened bonds with pharmaceutical industry partners, healthcare networks, community-based organizations, non-profit coalitions, and governmental agencies. I will highlight just two of these partnerships. First, APOS leaders were invited to attend the *Together for Supportive Cancer Care Summit* in Washington, DC in May of 2025. Past President Kelly Irwin and I sat with other non-profits as well as healthcare payors and patient advocates to discuss ways to ensure that every patient with cancer could access high-quality supportive care. Attendees from that Summit are joining us at this year's conference to present on innovative models to launch and fund psychosocial oncology services on Thursday at 9:45AM. Second, with the support from your President-Elect, Jesse Fann, APOS and ACCC renewed their partnership to conduct a second series of webinars on collaborative care models for psychosocial oncology. Tune in for an exciting deep dive into this topic starting on March 26th. Our strength has always come from our interdisciplinary collaborations and our willingness to open our doors, arms, and hearts to others, and these partnerships highlight how we can and will grow stronger together.

# Welcome!



Charles Kamen, PhD  
**APOS PRESIDENT**

Internally, we have continued to grow stronger as well. This year's conference has a record-breaking registration of over 550 attendees, with 4 plenaries, 32 podium sessions, and 229 posters. Our membership has surged to nearly 1,000 individuals. And we completed an exciting fundraising campaign in which we raised \$50,000 with a \$50,000 match, funds that will be used to galvanize the strategic growth of our society. The vast majority of dollars raised came from individual donations by APOS members, which speaks to our collective belief in our mission and vision.

I want to extend my heartfelt gratitude to our Program Planning Chair Justin Yopp, our Associate Chairs Nina Muriel and Tamryn Gray, and the entire Program Planning Committee for their extraordinary work in shaping this year's meeting. I have been so impressed by their interdisciplinary leadership and creativity in producing a program that bridges research and practice so beautifully, as well as creating meaningful opportunities for connection. On that note, I thank Mitch Golant, Cheryl Krauter, Lori Wiener, Matt Loscalzo, Ben Brewer, Ilana Braun, and Rina Foz for creating "Nourishing our Community for the Year Ahead: A Strategic Lunch to Cultivate Connection through Compassion, Collaboration and Courage," a session for us to build collaborations outside of the annual meeting. Please attend and share your experiences and thoughts.

Thank you for the work you do every day to advance psychosocial oncology. Thank you for showing up for your patients, for your communities, for your colleagues, and for yourselves. And thank you for being part of APOS. Throughout my career, APOS has been the place where I have been encouraged to bring my full self to my work. I encourage you to bring your full self to this meeting and to the work of APOS over the next year. As we grow stronger together and celebrate a harmony of healing, we look forward to hearing your voice!

With gratitude,



Charles Kamen, PhD, MPH  
President, American Psychosocial Oncology Society



# Table of Contents

**Important Information**

**Follow us on Social!**

**APOS 2026 - Download the App**

**Sponsors & Exhibitors**

**Invest in the Future of APOS**

**Conference Objectives**

**Continuing Education**

**APOS Board of Directors**

**APOS Program Planning Committee**

**APOS Fellows, Class of 2026**

**APOS Honorific Awards**

**APOS Early Career Travel Awards**

**APOS Health Equity Scholars**

**Thank you Strategic Partners**

**Save the Date - #APOS2027**

# Important Information

## \* **BADGES:**

Your name badge admits you to attend Conference activities for which you are registered. **You must wear your name badge at all times while you are in the conference area,** to identify yourself as an APOS attendee.

## \* **REGISTRATION:**

**The APOS Registration Desk** is located in the Mardi Gras Ballroom Foyer on the third floor. The Registration Desk will be open for badge pickup, information, and assistance, during the following hours:

<b>Tuesday, March 17</b>	10:00 am-4:00 pm
<b>Wednesday, March 18</b>	7:00 am-5:00 pm
<b>Thursday, March 19</b>	7:00 am-5:00 pm
<b>Friday, March 20</b>	7:30 am-11:30 am

## \* **SPEAKERS:**

**The APOS Speaker Ready Room** is located in Studio 10 on the second floor and will be open on the below dates and times for presenters to upload slides. The meeting organizers ask that all speakers upload their slides at least 4 hours prior to their scheduled presentation time.

<b>Tuesday, March 17</b>	10:30 am-4:00 pm
<b>Wednesday, March 18</b>	7:30 am-4:00 pm
<b>Thursday, March 19</b>	7:30 am-4:00 pm
<b>Friday, March 20</b>	7:30 am-11:30 am

## \* **MEMBERSHIP:**

If you would like to join APOS, you can log onto our website at [www.apos-society.org](http://www.apos-society.org) and register online. You may also contact the APOS office at 615-432-0090 for more information.

# Important Information

## HOTEL & LOCAL DINING

### HOTEL RESTAURANTS:

#### **Canal Street Pantry**

(coffee, light bites, and grab and go)

Located in the Lobby

Open 6:00 am-12:00 am daily

#### **55 Fahrenheit (American, Bar)**

Monday-Thursday 11:00 am-12:00 am

Friday and Saturday 11:00 am-1:00 am

#### **5Fifty5 Restaurant**

(American, Breakfast and Lunch)

Open 6:30am-11:00am daily

#### **Canal Street Burger Bar (American)**

Open 11:00 am-12:00 am daily

### LOCAL DINING:

There are plentiful local dining options close to the New Orleans Marriott.

Acme Oyster House

724 Iberville Street

Cafe' Du Monde

800 Decatur Street

Mother's Restaurant

401 Poydras Street

French Truck Coffee

217 Charles Street

Brennan's

417 Royal Street

Ruby Slipper

204 Decatur Street

Irene's

529 Bienville Street

Manolitos

508 Dumaine Street

Tsunami Sushi

601 Poydras Street

Cafe'Beignet

334 Royal Street

Carousel Bar at Hotel Montelone

214 Royal Street

Felipe's Mexican

301 North Peters Street

Forth Wall

614 Gravier Street

Muriel's in Jackson Square

801 Chartres Street



# Follow us! APOS 2026

## Did you know that APOS is more than a conference?

From webinars to relevant articles, we're your go to place for all things psychosocial oncology. APOS is not just a membership-based society, it's a community and one that you're a valuable part of. Stay in the know, be part of the conversation and let's stay connected!

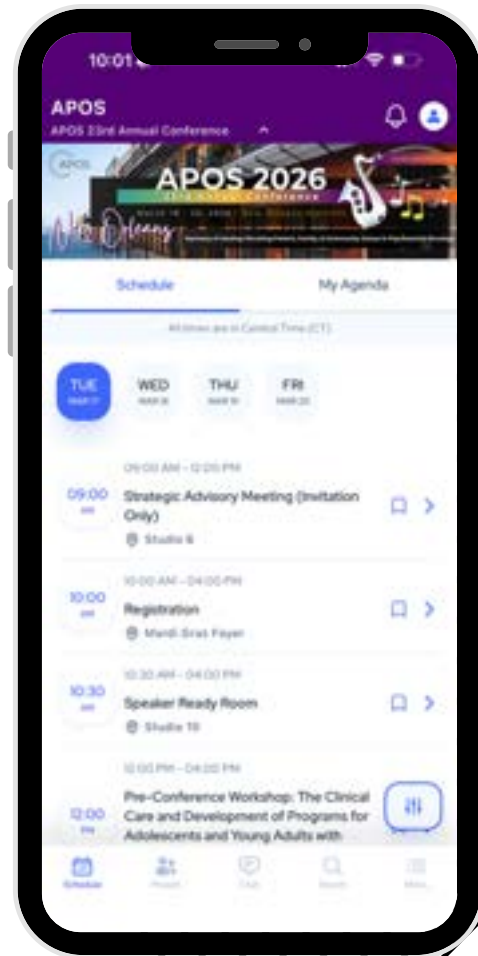
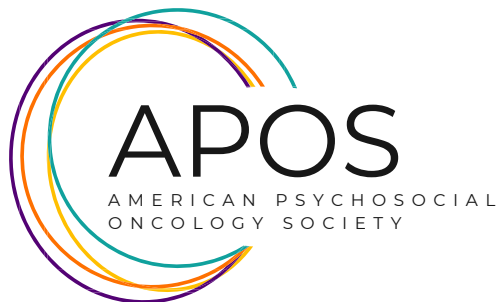
[#APOS2026](#) [#psychosocialoncology](#) [#cancer](#)



# DOWNLOAD THE APOS APP

The APOS 2026 App is now available on both the Apple App Store and the Google Play Store.

## SEARCH "APOS 2026"



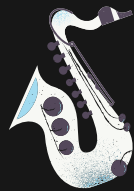
Google Play



Apple Store



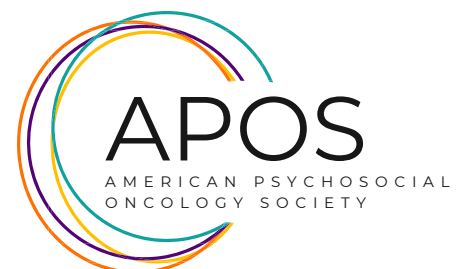
# Thank you to our sponsors!



# CONFERENCE OBJECTIVES

After attending the 2026 Conference participants will be able to:

- 1. Education/training.** Define training priorities for the field of psychosocial oncology that reflect the evolving landscape of cancer care and the diverse needs of our programs and trainees from all disciplines (psychology, social work, psychiatry, etc.). This includes special focus on networking to facilitate meaningful relationships, professional advancement, program development, and expanding psychosocial oncology training to improve access and utilization of psychosocial oncology in underserved communities.
- 2. Clinical Practice.** Redefine the role of the psychosocial oncology clinician and how we deliver cancer care, with a focus on building a community within and across cancer care settings. Of special interest is offering tools and receiving mentorship around evolving models of care and strategies to enhance clinician resilience that is inclusive of all members in the multidisciplinary field of psychosocial oncology.
- 3. Research.** Identify innovative models for extending the reach of psychosocial care to all impacted by cancer. Special emphasis will be placed on novel and sustainable digital health interventions with potential for wide implementation and the goal of ensuring equitable access to all patients, survivors, and caregivers.
- 4. Advocacy.** Translate scientific findings into opportunities for advocacy - from policy level to professional wellness and patient advocate inclusion - fostering the diverse views and expertise of our membership.



## **Joint Accreditation Statement**

In support of improving patient care, this activity has been planned and implemented by Amedco LLC and American Psychosocial Oncology Society (APOS). Amedco LLC is jointly accredited by the Accreditation Council for Continuing Medical Education (ACCME), the Accreditation Council for Pharmacy Education (ACPE), and the American Nurses Credentialing Center (ANCC), to provide continuing education for the healthcare team.



JOINTLY ACCREDITED PROVIDER™  
INTERPROFESSIONAL CONTINUING EDUCATION

## **Physicians (ACCME) Credit Designation**

Amedco LLC designates this live activity for a maximum of 19.50 *AMA PRA Category 1 Credits*™. Physicians should claim only the credit commensurate with the extent of their participation in the activity.

Amedco LLC designates this enduring activity for a maximum of 49.0 *AMA PRA Category 1 Credits*™. Physicians should claim only the credit commensurate with the extent of their participation in the activity.

## **Nurses (ANCC) Credit Designation**

Amedco LLC designates this activity for a maximum of up to 19.50 Live Activity / 49.0 Enduring Material ANCC contact hours.

## **Psychologists (APA) Credit Designation**

This course is co-sponsored by Amedco and APOS. Amedco is approved by the American Psychological Association to sponsor continuing education for psychologists. Amedco maintains responsibility for this program and its content. Up to 19.50 Live Activity / 49.0 Enduring Material hours.

The following state boards accept courses from APA providers for Counselors: AK, AR, AZ, CA, CO, CT, DC, DE, FL, GA, HI, IA, ID, IL, IN, KS, KY, MD, ME, MO, NC, ND, NH, NE, NJ, NM, NV, OK\*, OR, PA, RI, SC, SD, TN, TX, UT, VA, WI, WY

MI: No CE requirements.

\*OK: Accepts APA credit for live, in-person activities but not for ethics and/or online courses.

The following state boards accept courses from APA providers for MFTs: AK, AR, AZ, CA, CO, CT, DE, FL, GA, IA, ID, IN, KS, MD, ME, MO, NE, NC, NH, NJ, NM, NV, OK\*, OR, PA, RI, SC, SD, TN, TX, UT, VA, WA, WDC, WI, WY

AL MFTs: Credits authorized by NBCC or any other state licensing agency will be accepted.

MA MFTs: Participants can self-submit courses not approved by the MAMFT board for review.

The following state boards accept courses from APA providers for Addictions Professionals: AK, AR, CO, CT, DC, DE, GA, IA, IN, KS, LA, MD, MO, MT, NC, ND, NE, NJ, NM, NY (held outside NY ONLY), OK\*, OR, SC, UT, WA, WI, WY

The following state boards accept courses from APA providers for Social Workers: AK, AR, AZ, CA, CO, DE, FL, GA, ID, IN, KY, ME, MN, MO, NE, NH, NM, OR, PA, VT, WI, WY

## **Social Workers (ASWB) Credit Designation**

As a Jointly Accredited Organization, Amedco is approved to offer social work continuing education by the Association of Social Work Boards (ASWB) Approved Continuing Education (ACE) program. Organizations, not individual courses, are approved under this program. State and provincial regulatory boards have the final authority to determine whether an individual course may be accepted for continuing education credit. Amedco maintains responsibility for this course. Social Workers completing this course receive up to 19.50 Live Activity / 49.0 Enduring Material GENERAL continuing education credits.

The following state boards accept courses offering ASWB ACE credit for Social Workers: AK, AL, AR, AZ, CA, CO, CT, DC, DE, FL, GA, HI, ID, IL, IN, IA, KS, KY, LA, ME, MD, MA, MI, MN, MS, MO, MT, NC, ND, NE, NH, NM, NV, OH, OK\*, OR, PA, RI, SC, SD, TN, TX, UT, VT, VA, WA, WI, WV\*, WY

\*OK: Accepts ASWB ACE for live, in-person activities but not for ethics and/or online courses.

\*WV: Accepts ASWB ACE unless activity is held live in West Virginia.

The following state boards accept courses offering ASWB ACE credit for Counselors: AK, AR, AZ, CA, CO, CT, DC, FL, GA, IA, ID, IL, IN, KS, MA, MD, ME, MO, ND, NE, NM, NH, NV, OK\*, OR, PA, TN, TX, UT, VA, WI, WY

AL: Activities without NBCC approval may be approved upon receipt of documentation prior to the activity BEFORE the event. No approvals afterward by the board.

MI: No CE requirement

The following state boards accept courses offering ASWB ACE credit for MFTs: AK, AR, AZ, CA, CO, FL, IA, ID, IN, KS, MD, ME, MO, NC, NE, NH, NM, NV, OK\*, OR, PA, RI, TN, TX, UT, VA, WI, WY

AL MFTs: Credits authorized by NBCC or any other state licensing agency will be accepted.

MA MFTs: Participants can self-submit courses not approved by the MAMFT board for review.

MI: No CE requirement.

The following state boards accept ASWB ACE credit for Addictions Professionals: AK, CA, CO, CT, GA, IA, IN, KS, LA, MO, MT, ND, NM, NV, OK, OR, SC, WA, WI, WV, WY

## **Nurse Practitioners**

The American Association of Nurse Practitioners (AANP) recognizes the Accreditation Council for Continuing Medical Education (ACCME) and the American Nurses Credentialing Center (ANCC) as approved accreditors and allow reciprocity for AANPCP continuing education credit.

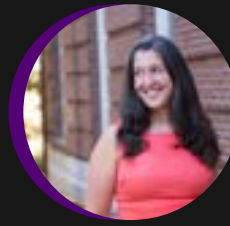
## **Physician Assistants**

PAs may claim a maximum of 19.50 Live Activity / 49.0 Enduring Material Category 1 credits for completing this activity. NCCPA accepts AMA PRA Category 1 Credit™ from organizations accredited by ACCME or a recognized state medical society.

# Board of Directors



**Charles Kamen**  
President



**Kelly Irwin**  
Past-President



**Jesse Fan**  
President-Elect



**Hermioni Amonoo**  
Secretary



**Sheila Lahijani**  
Treasurer



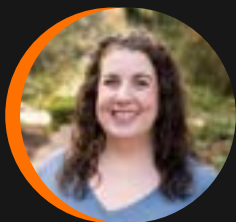
**Carlos Fernandez Robles**  
Director of Membership



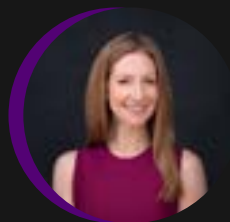
**Timothy Sannes**  
Director of Mentorship



**Cheryl Krauter**  
Director of  
Communications



**Jessica Vanderlan**  
Director of Professional  
Education

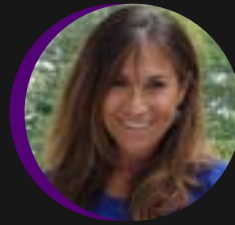


**Jamie Jacobs**  
Director of Research

# Board of Directors



**Marcus Alt**  
Director of DEI



**Lori Wiener**  
Federal Liaison



**Deborah Snyder**  
Director of Development  
& Strategic Partnerships



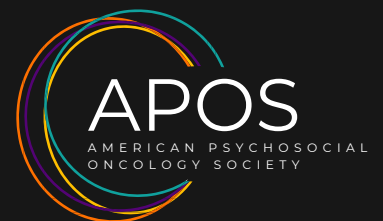
**Pia Banerjee**  
American Cancer  
Society Liaison



**Kelly Trevino**  
Psycho-Oncology  
Journal Liaison



**Leora Lowenthal**  
Association of Oncology of Social  
Work Liaison



*Thank you so much!*

# TO OUR PROGRAM PLANNING COMMITTEE

## 2026 Program Chair

**Justin Yopp, PhD**

University of North Carolina Lineberger

## 2026 Program Associate Chairs

**Tamryn Fowler Gray, MPH, PhD**

UNC-CH School of Nursing

**Anna Muriel, MD, MPH**

Dana-Farber Cancer Institute

## 2026 Committee Members

**Yasmin Asvat, PhD**

Rush University Medical Center

**Devika Jutagir, PhD**

Memorial Sloan Kettering  
Cancer Center

**Kelly Scherger, PhD**

South Charlotte VA

**Erin Baurle, PsyD**

University of Colorado School of  
Medicine

**Natalie McAndrew, PhD, RN**

University of Wisconsin,  
Milwaukee

**Kelly Tan, PhD**

University of Pittsburgh School  
of Nursing

**Ilana Braun, MD**

Dana-Farber Cancer Institute

**David Morris, PhD**

Siteman Cancer Center, Barnes  
Jewish Hospital, Washington  
University School of Medicine

**Robin Valpey, MD**

University of Pittsburgh Medical  
Center

**Ben Brewer, PsyD**

University of Colorado Anschutz  
Medical Campus

**Tracey Murry, PhD**

Ochsner MD Anderson Cancer  
Center

**Jessica Vanderlan, PhD**

Siteman Cancer Center, Barnes  
Jewish Hospital, Washington  
University School of Medicine

**Kaleena Chilcote, MD**

Cleveland Clinic Taussig Cancer

**Michelle Fingeret, PhD**

Fingeret Psychology Services

**Ashley Nelson, PhD**

Harvard Medical School;  
Massachusetts General Hospital

**Celeste Vaughn-Briggs, LCSW**

Thomas Jefferson University  
Hospital

**Rina Fox, PhD, MPH**

University of Arizona College of  
Nursing

**Maria Olex, PsyD**

University of Colorado

**Lori Wiener, PhD**

National Cancer Institute

**Jamie Jacobs, PhD**

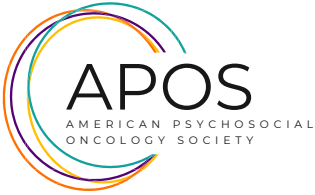
Harvard Medical School;  
Massachusetts General Hospital

**Tim Sannes, PhD**

UMASS Medical School

**Amy Zhang, PhD**

Case Western Reserve  
University



*Congratulations!*

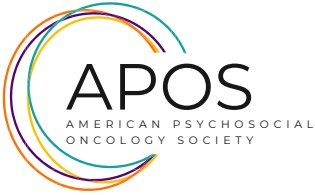
APOS Fellows Class of 2026



**Kimlin Ashing, PhD**

Dr. Kimlin Tam Ashing is Professor and Founding Director of the Center of Community Alliance for Research and Education (CCARE) at City of Hope. She received her doctorate in Clinical Psychology at the University of Colorado, Boulder. She is a community-advocate scientist attending to contexts and intersectionality (e.g., society, biology, family and person) in health with multiethnic, underserved communities. She is a psychosocial oncologist working closely with multisectoral partners including community partners for Team Science towards evidenced clinically and community responsive health improvement interventions. Dr. Ashing is a notable leader in cancer survivorship and has published over 130 articles and book chapters. She holds/held several national leadership roles within APOS, the American Association for Cancer Researchers (AACR); the NIH-funded African-Caribbean Cancer Consortium, Society of Behavioral Medicine (SBM); CancerCare Patient Values Initiative; ASCO-Depression and Anxiety Expert Panel; Asian Pacific Islander Native Hawaiian Cancer Survivors Network, Young Survival Coalition; and American Cancer Society, LA. She is Life member Association of Black Psychologists. She was awarded the prestigious Fox Award and SBM Gruman Award.

Raised in a multicultural/multilingual (Chinese/Afro-Caribbean) home, and youngest of eight siblings, she recognized the salience of family and contexts. As the daughter of two former cancer survivors, she is compassionate and passionate about reducing cancer burden and disparities. She is the mother of three children: Joshua - enjoying Market Research and fathering two daughters; Kemi - a poised, science and art lover, and accomplished writer and doctoral candidate studying geobiology; and Ajoin - a fashion influencer and college student. She thrives on faith, family, science to society, and organic gardening.



*Congratulations!*

## APOS Fellows Class of 2026



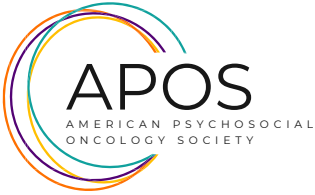
**Ilana Braun,, MD**

Ilana Braun, MD, FACLP, is a cancer psychiatrist whose clinical and scholarly work centers on alleviating psychosocial distress that threatens the integrity of cancer care. After completing psychiatry residency at New York-Presbyterian/Columbia (2005) and a consultation-liaison fellowship at Brigham and Women's Hospital (2006), she joined the faculty at Massachusetts General Hospital Cancer Center and Harvard Medical School. She later became Chief of the Division of Adult Psychosocial Oncology at Dana-Farber Cancer Institute (DFCI), where she led substantial programmatic growth before transitioning in 2021 to focus on her rapidly expanding medicinal cannabis research portfolio. In 2025, she assumed the role of Interim Chief of DFCI's unified Division of Psychosocial Oncology.

Nationally, Dr. Braun is recognized for expertise in psycho-oncology, psychosocial distress management, and cannabis therapeutics. She serves on the NCCN Distress Management Panel, contributes to ASCO guideline development, and previously served on the American Psychosocial Oncology Society board. She co-led DFCI's electronic psychosocial distress screening innovation, now adopted across Mass General Brigham.

Dr. Braun is a leading voice in the evidence-based use of cannabis in oncology. She co-chaired ASCO's first clinical guideline on cannabis and cannabinoids and first-authored its 2024 Journal of Clinical Oncology white paper. Her research spans socio-behavioral inquiry, preclinical collaboration, and clinical trials, including a recent randomized controlled trial of cannabidiol for anxiety in advanced cancer.

A dedicated educator and mentor, Dr. Braun has supported the development of numerous trainees and emerging investigators. Across her clinical, administrative, and research efforts, she strives to improve care for individuals navigating cancer and psychiatric illness.



*Congratulations!*

APOS Fellows Class of 2026

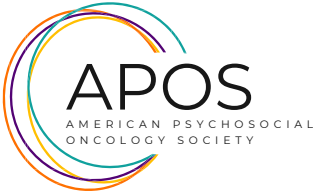


**Erin Kent, PhD**

Erin Kent is an Associate Professor and Associate Chair for Research in Health Policy and Management at the UNC–Chapel Hill Gillings School of Global Public Health. She is also a member of the Lineberger Comprehensive Cancer Center, a Health Services Research Fellow at the Cecil G. Sheps Center, and a Fellow of the Society of Behavioral Medicine.

Dr. Kent's work centers on developing and implementing supportive care interventions for people with serious illness and conducting research that informs policies to strengthen support for family caregivers across the lifecourse. Her mission is to advance evidence-based strategies that improve caregiver well-being and integrate caregiver support into diverse health care contexts. She leads multiple transdisciplinary collaborations with researchers, clinicians, community partners, and students at UNC and nationally. Prior to joining UNC, she served as a Program Officer in the Division of Cancer Control and Population Sciences at the National Cancer Institute and helped build a research resource portfolio in caregiving, including funding announcements, a national report on cancer caregiving, and survey items on caregiving in the Health Information and National Trends Survey.

Currently, she is adapting, testing, and implementing enCompass, a supportive care coaching intervention for cancer caregivers within cancer care delivery systems. She also partners with state and national organizations to advance recommendations from the National Strategy to Support Family Caregivers. She has served as the APOS Caregiver Research Special Interest Group Chair in the past and is invested in growing the society's work to help support the psychosocial needs of cancer caregivers.



*Congratulations!*

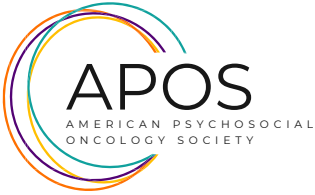
APOS Fellows Class of 2026



**Kelly Irwin, MD**

A psychiatrist by training, Dr. Kelly Irwin is the Director of the Collaborative Care and Community Engagement Program at Massachusetts General Brigham Cancer Institute and as Assistant Professor of Psychiatry at Harvard Medical School, in Boston, Massachusetts. She is also the Founding Director of the Engage Initiative, a multi-sector coalition dedicated to ensuring that mental illness is never a barrier to cancer care or research. Dr. Irwin is immediate Past President of the American Psychosocial Society and has served as co-chair of the Strategic Advisory Council, Director of Communications, and Director of Diversity, Equity, and Inclusion.

Dr. Irwin's clinical research program is dedicated to closing the cancer mortality gap and improving outcomes for individuals affected by cancer and mental illness and their caregivers through intervention development, implementation, dissemination, and coalition-building. She developed the Bridge collaborative care model for serious mental illness and cancer and demonstrated the promise of the intervention to decrease cancer care disruptions and improve psychosocial outcomes. Dr. Irwin is deeply committed to the human right to health, ending mental health discrimination, and strengthening connection within the APOS community.



*Congratulations!*

APOS Fellows Class of 2026

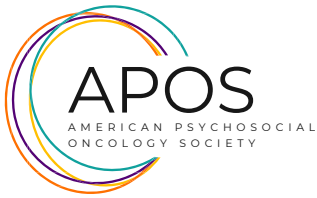


**Christian Nelson, PhD**

Dr. Nelson is the Chief of the Psychiatry Service and Attending Psychologist in the Department of Psychiatry and Behavioral Sciences at Memorial Sloan Kettering Cancer Center. He is also a Professor of Psychology in the Department of Psychiatry at Weill Medical College of Cornell University.

He specializes in improving the quality-of-life of patients treated for genitourinary malignancies and older adults with cancer. As the psychological liaison to the Genitourinary and Sexual Medicine services, he helps men with prostate cancer who experience treatment-related sexual dysfunction, and their partners, to optimize intimacy before, during, and after treatment. He works with the Geriatric Disease Management team in the hospital, providing psychological support for age 65+ patients and he co-facilitates a support group aimed at patients dealing with the combined issues of cancer and aging.

Through his work with the Symptom Management, Psychotherapy, and Aging and Cancer laboratories, his research interests focus on the impact of cancer on quality-of-life in prostate and geriatric cancer patients, and the development of new psychotherapies targeted for these groups. Specific areas of research have included sexual dysfunction post-cancer treatments; the development of a geriatric-specific assessment measure and psychotherapy; cognitive effects of hormonal therapy in prostate cancer patients; and distress in Black men with prostate cancer.



*Congratulations!*

## APOS Fellows Class of 2026



**Deborah J. Snyder,  
LCSW, MSW**

Deborah (Debbie) J. Snyder received her Bachelor of Arts in psychology, cum laude, from Duke University and her Masters Degree in Social Work, Phi Kappa Phi, from the University of Maryland School of Social Work. She received post-graduate externship fellowship training at the Family Therapy Practice Center in Washington, D.C. She has an Accredited Coaching Certification from the International Coaching Federation.

Ms. Snyder has been on staff at the National Institute of Health since 1992. Currently, she holds the positions of Senior Advisor to the National Institute of Mental Health's Clinical Director, Faculty on the NIMH Psychiatry Consultation Liaison Service, Georgetown University Medical Center Department of Psychiatry, and the NIH Hospice and Palliative Care Medicine Program & the Deputy Director of Patient Safety and Quality. In addition, she serves as Deputy Chair of the Graduate Medical Education Committee's subcommittee on resident wellbeing.

A major focus of her career has been as clinician/educator at the interface of medical and mental health. In addition, Ms. Snyder conducts research in suicide risk screening in medical settings co-developer of the ASQ™ & ASQ Toolkit to help guide institutions in the implementation of screening programs. She is an organizational leader on the topics of enhancing staff and trainee wellbeing and reducing burnout.

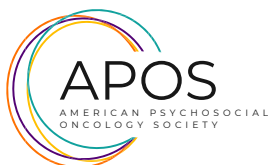
Most recent awards include: the NIH Clinical Center CEO 2025 Patient Safety Champion Award; NIMH 2022 Director's Award for supporting mental health services for NIH community; the NIH 2021 Director's Award for outstanding leadership to the NIH during the Covid-19 pandemic.



## THE JIMMIE HOLLAND LIFETIME ACHIEVEMENT AWARD

**Michelle B. Riba, MD, MS**

Michelle B. Riba, M.D., M.S. is a consultation-liaison psychiatrist and Professor of Psychiatry, University of Michigan and Director of the PsychOncology Program, University of Michigan Rogel Cancer Center. She is the chair of the NCCN Distress Guidelines Panel and serves on the NCCN Fatigue Guideline Panel; and vice chair of the WPA Section on PsychOncology and Palliative Care. Dr. Riba has served as President of the APA, AADPRT, AAP, Secretary of the WPA, graduate of ELAM, and AMA representative to the Commission on Cancer. She is editor-in chief, Current Psychiatry Reports; former deputy-editor, Psychiatric Times; editor and series editor of over 50 books and author of over 100 peer-reviewed publications. A noted educator, Dr. Riba has served as Associate Chair for Education and Academic Affairs, Psychiatry Residency Training Director, and Director of the Consultation-Liaison fellowship at the University of Michigan. Dr. Riba is the recipient of multiple awards for teaching and mentorship; clinical excellence; scholarship; and leadership. Dr. Riba's clinical research interests include screening and treatment for distress management in oncology settings, cancer and severe mental illness, collaborative care and has served as Associate Director, Michigan Institute for Clinical and Health Research (CTSA) and as peer-reviewer for DOD and Congressionally Directed Medical Research Programs (PRMRP). For many years, Riba has served on the Professional Advisory Board of the Cancer Support Community of Greater Ann Arbor and is an active speaker and member.



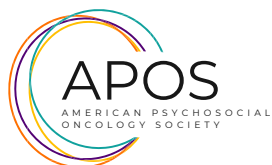
*Congratulations!*



## THE RUTH MCCORKLE EXCELLENCE IN RESEARCH MENTORSHIP AWARD

**Allison Applebaum, PhD**

Dr. Allison Applebaum is a caregiving scientist, writer, researcher, speaker, and advocate. She is a Professor of Geriatrics and Palliative Medicine and the Director of the Steven S. Elbaum Family Center for Caregiving at the Icahn School of Medicine at Mount Sinai. She was previously the Founding Director of the Caregivers Clinic at Memorial Sloan Kettering Cancer Center, the first program of its kind in the United States to provide comprehensive psychosocial care to family members and friends of patients who are in the caregiving role. Dr. Applebaum's program of research focuses on the development and dissemination of supportive services for family caregivers. She has published over 100 articles, reviews, and book chapters on these topics, and is the editor of the textbook *Cancer Caregivers* (Oxford University Press, 2019). Dr. Applebaum has received competitive funding for her research, including awards from the National Cancer Institute, the National Institute of Nursing Research, and the American Cancer Society. She is also the author of the recently published narrative nonfiction book, *Stand By Me: A Guide to Navigating Modern, Meaningful Caregiving* (Simon Element, 2024).



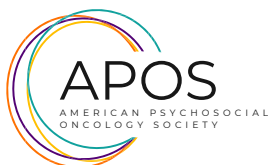
*Congratulations!*



## **THE AVERY D. WEISMAN & J. WILLIAM WORDEN AWARD FOR NEW INVESTIGATORS**

**Rebecca M. Saracino, PhD**

Rebecca M Saracino, PhD is an Assistant Attending in the Department of Psychiatry and Behavioral Sciences at Memorial Sloan Kettering Cancer Center. She is a licensed clinical psychologist with extensive training and over a decade of experience in psycho-oncology, end-of-life care, and geriatrics. Her research focuses on increasing the reach of evidence based psychotherapies for individuals with cancer.



*Congratulations!*



## THE DISTINGUISHED PUBLIC SERVICE TO PSYCHOSOCIAL ONCOLOGY AWARD

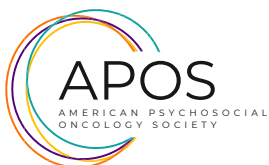
**Krista Nelson, LCSW, OSW-C, FAOSW, FAPOS, FACCC**

Krista Nelson, LCSW OSW-C FAOSW FAPOS FACCC is trained as an oncology social worker and works in clinical & Manager roles within the Providence Cancer. Krista is the current Editor-in-Chief of Oncology Issues.

Krista provides individual and group support for those affected with cancer and additionally has an expertise in facilitating online support groups. She also coordinates a program that focuses on the care of children who have a parent with cancer. She has published in her field and spoken to over 100 national audiences on various topics related to cancer.

Krista is a past President of both the Association of Oncology Social Work (AOSW) and Association of Cancer Care Centers and past Director of the American Psychosocial Oncology Society (APOS), National Accreditation Program for Breast Centers, & American Clinical Social Work Association. Krista was named as a finalist in the Schwartz Center Compassionate Caregiver of the Year award was awarded the American Cancer Society/Association of Oncology Social Work Leadership award in 2019 and Social Worker of the Year for Providence Health & Services in Oregon in 2021. She is also a fellow of AOSW, ACCC and APOS for her contributions to her profession.

Krista also has been a volunteer facilitator at retreats for women with breast cancer and annually at camps and programs that support grieving children. She also has volunteered over 5 months on medical relief teams to Haiti since 2009. She currently volunteers locally with Portland Street Medicine providing mental health support to the unhoused in Portland, Oregon.



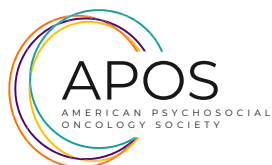
*Congratulations!*



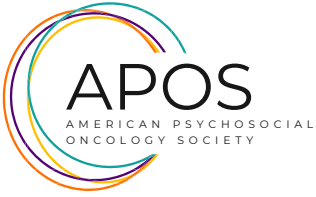
## THE OUTSTANDING CLINICAL CARE AWARD

**Julia Kearney, MD**

Julia Kearney MD is a child and adolescent psychiatrist working in pediatric psycho-oncology at Memorial Sloan Kettering Cancer Center since 2006. She grew up in Pittsburgh, PA, the oldest of five children, and went to college at John Carroll University where she studied Chemistry. She went to medical school at the University of Cincinnati College of Medicine, followed by training in New York City at the Mt. Sinai Triple Board program (for Pediatrics, General Psychiatry, and Child and Adolescent Psychiatry). She did the CL Psychiatry fellowship at MSK, and stayed to work with her mentors in psycho-oncology, Dr. Abraham Bartell, Dr. William Breitbart, and Dr. Jimmie Holland, as well as the amazing pediatric oncology and nursing staff. At MSK, she is now an Associate Professor and Clinical Director of Pediatric Psycho-Oncology and has had the opportunity to conduct clinical projects and academic work in pediatric delirium, staff resilience and debriefing, pediatric palliative care and communication skills, parent and caregiver support, and AYA psychotherapy. She is an avid teacher at all levels of medical training and across interdisciplinary fields and recently completed membership on the Physically Ill Child Committee of American Academy of Child and Adolescent Psychiatry, for which she remains a mentor and frequent presenter. Outside of work, she enjoys spending time with her family, singing in choir, seeing Broadway and dance performances, traveling, reading, and doing the NYTimes puzzles.



*Congratulations!*



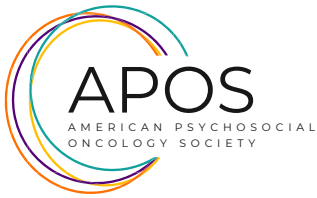
*Congratulations!* 

## EARLY CAREER TRAVEL AWARDS



**Katherine Brown**

Katherine Brown began her career in education in 2006 after graduating from Wake Forest University. Following her twin sister's metastatic cancer diagnosis as a young adult in 2015, she found her passion in meeting the often-unmet needs of cancer patients, survivors, and caregivers. She established a local nonprofit, The Boon Project, in 2017 to provide psychosocial support for adolescents and young adults, like her sister, facing a cancer diagnosis. Through advocacy, collaboration, education, and program building, she's spent the last nine years identifying and addressing the needs of AYA patients and survivors in the Charleston, SC area. In 2025, she joined the programs team at Cancer Hope Network where she supports their mission to provide one-to-one peer support for cancer patients and caregivers through mentorship. She currently serves as the Program Manager, Volunteer Services at CHN where she recruits, trains, and provides ongoing education for peer mentors. Katherine holds a master's degree in education from University of South Carolina and maintains her teaching license in the State of South Carolina. She continues her role as an educator in the cancer space and is a lifelong learner and teacher. She lives near Charleston, SC with her husband and four children.



*Congratulations!* 

## EARLY CAREER TRAVEL AWARDS

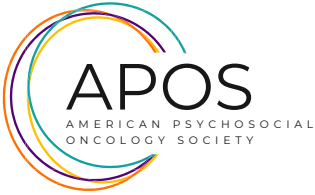


**Jacob Gustaveson**

Jacob Gustaveson is a Clinical Psychology PhD Candidate at American University. Prior to embarking on his clinical psychology career, Jacob served the City of New York as a project manager of integrated health programs for both the city's public health department (New York City Department of Health & Mental Hygiene) and its public care delivery system (New York City Health + Hospitals). He credits this public health orientation as his engine to improve access to evidence-based mental health care and inform clinical practice improvement in integrated health settings.

Jacob is currently a Health Psychology Resident at the Medical College of Wisconsin/Froedtert Hospital. In this capacity he provides services across the cancer care continuum including inpatient consultation visits with patients receiving active treatment, pre-bone marrow transplant evaluations, and outpatient psychotherapy sessions to support coping. After residency, Jacob aims to pursue a psychosocial oncology fellowship in an academic medical center where he can continue his clinical and research endeavors to support the cancer community.

As a psychologist rooted in the scientist-practitioner model, Jacob is committed to performing rigorous applied intervention research to evaluate and innovate integrated mental health programs for those affected by cancer. He has disseminated research in peer-reviewed journals and professional association conferences on topics such as augmenting therapy interventions through digital applications, improving therapist competence in behavioral treatment, and evaluation of novel multi-intervention programs.



*Congratulations!* 

## EARLY CAREER TRAVEL AWARDS



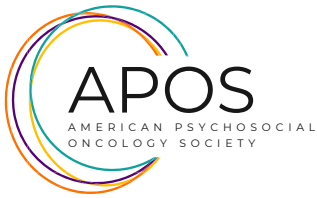
**Lauryn Trisha Kibugi**

Lauryn Trisha Kibugi is a cancer epidemiologist and global health researcher specializing in real-world evidence and health outcomes research. She is currently pursuing her M.S. in Global Health at Duke University, where she serves as a Graduate Research Assistant with the TORCHE (Transdisciplinary Otolaryngology Research, Community Health and Equity) lab at the Department of Head and Neck Surgery & Communication Sciences. She received her Bachelor of Science in Biology and Gender and Sexuality Studies from Bates College.

Trisha's commitment to health equity began early—at age 17, she received her first grant to implement menstrual health initiatives in Kenya. This experience catalyzed her career in public health and shaped her approach to addressing health disparities in underserved communities.

Her professional experience spans diverse health sectors, including health promotion programs, health insurance coverage expansion for people living with HIV, substance use prevention, health workforce shortage area mapping, and gun violence prevention initiatives. She has also conducted epidemiological research at Cambridge Health Alliance and Harvard Medical School/Mass General Brigham.

Trisha's research on health equity has been published in peer-reviewed journals, including work examining mental health outcomes among transgender and gender diverse populations. Her work is driven by a belief that rigorous research, combined with community-centered approaches, can transform health systems and improve lives.



*Congratulations!* 

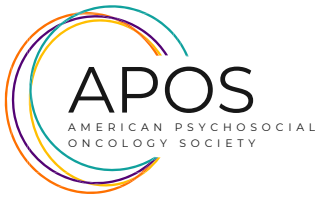
## EARLY CAREER TRAVEL AWARDS



**Luís Carlos Lopes-Júnior**

I am a Postdoctoral Fellow at the Department of Noncommunicable Diseases and Mental Health-NMH, Pan American Health Organization/World Health Organization (PAHO/WHO), in Washington, D.C. I also serve as an International Consultant in Childhood Cancer for PAHO/WHO, supporting the CureAll Framework of the WHO Global Initiative for Childhood Cancer across the Region of the Americas, with particular emphasis on psychosocial care and survivorship.

I hold a Bachelor of Science in Nursing from Marília Medical School (Famema, 2010), followed by advanced training in Genetic Counseling in Cancer (HCFMRP/USP, 2012), a Specialization in Oncology Nursing (USP, 2013), a Master of Science (USP, 2013), a Specialization in Health Management (Unifesp, 2016), and a PhD in Sciences (Oncology, USP, 2017). My doctoral training included a research fellowship at the University of Alberta and the Cross Cancer Institute (Edmonton, AB, Canada). In 2021, I received the CAPES Award for Outstanding Doctoral Dissertation. I currently hold a CNPq Research Productivity Fellowship (2024–2027)—a highly competitive national award granted to leading researchers in Brazil in recognition of sustained scientific excellence, international impact, and leadership in research. I was ranked among the Top 2% Most Influential Scientists Worldwide by SCOPUS–Elsevier and Stanford University in 2023, 2024 and 2025. Since 2019, I have served as an Adjunct Professor at the Federal University of Espírito Santo-Ufes, where I have held leadership roles in graduate education and research governance. I direct the Oncology Research and Study Group (GEPONC/CNPq) and actively collaborate with international research networks in the United States, Canada, France, and Portugal. I am an Academic Editor for PLOS ONE and Frontiers in Medicine (Oncology) and an active member of ASCO, ESMO, and SIOP. My research focuses on psycho-oncology, childhood cancer, cancer symptom clusters, psychoneuroimmunology, tumor biomarkers, and cancer epidemiology.



*Congratulations!* 

## EARLY CAREER TRAVEL AWARDS



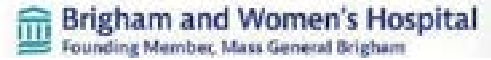
**Flora Zik**

Flora Zik is a third-year undergraduate student in the College Scholars Honors Program at the University of California, Los Angeles, pursuing a Bachelor of Science in Cognitive Science with an expected graduation date of June, 2027. Her academic interests center on psycho-oncology and pediatric psychology, with a focus on understanding the psychosocial and biological factors that shape patient and caregiver experiences.

Flora currently serves as a Research Assistant in UCLA's Aging, Biology & Behavior Lab, where she investigates the biological aging process and tests the role of behavioral factors in modifying accelerated aging. Her independent research focuses on a literature review titled Exploring the Link Between Childhood Food Insecurity and Cognitive Aging, which she presented as a poster at the UCLA Psychology Undergraduate Research Conference in May, 2025.

In Summer 2025, Flora was selected as an Undergraduate Researcher in the University of Arizona's STEP-UP Program, where she studied psychosocial adaptation in caregiver-survivor dyads in cancer care. Her work included analyzing patient and caregiver feedback surveys, identifying areas for improvement in clinical support, and co-authoring a caregiver-focused chapter for the next edition of the Symptom Management and Survivorship Handbook (SMSH.)

In addition to her research, Flora is actively involved in leadership and service as the Director of Campus Relations and Social Media for UCLA's B+ Foundation, which supports families affected by childhood cancer, and as a peer mentor in the College Scholars Honors Program. Her hobbies include playing intramural cornhole, fitness, and cooking new foods. Flora plans to apply to PhD programs in clinical or developmental psychology and to continue conducting research in psycho-oncology. Flora is honored to participate in the APOS Annual Conference and excited to share her research with this scholarly community.



## Academic Adult Psychiatrist

The **Dana-Farber Cancer Institute (DFCI) Department of Supportive Oncology** seeks a full-time Adult Psychiatrist to join our interprofessional team serving an adult oncology population. This position offers an exciting career opportunity within a vibrant clinical and academic environment, where faculty can focus on clinical innovation, education, and/or research. To be considered, you must have completed a Consultation-Liaison Fellowship and be board certified/eligible in Consultation-Liaison Psychiatry.

### Why you should join us

Our department houses broad innovation, education, and research efforts. We seek candidates who wish to pursue academic interests in psychosocial oncology such as the management of psychiatric disorder comorbid with cancer, symptom management, substance use disorder, collaborative care, and equitable access and quality of psychosocial services to underserved populations. Our department is deeply committed to high-quality mentorship and sponsorship of new faculty in their academic pursuits and provides numerous opportunities for mentorship of learners at all levels. A broad pool of academic opportunities and mentorship are also available throughout the DFCI, affiliated HMS hospitals, and the broader HMS communities.

### Ready to join us? Here's what you'll do

Work closely with our interprofessional teams of psychiatrists, social workers, psychologists, nurses, physician assistants, pharmacists, and palliative care colleagues to provide state-of-the-art psychiatric care to oncology patients within both our outpatient and inpatient clinical services.

Participate in extensive formal and informal teaching activities at DFCI, affiliated HMS hospitals, and the HMS Center for Palliative Care. T

**If interested in applying to this role, please send a cover letter detailing your**

#### **clinical, educational, and academic interests along with your CV to:**

Amanda Bryant, Department of Supportive Oncology, Dana-Farber Cancer Institute, 450 Brookline Ave, Boston, MA 02215 Or email to:

Amanda\_Bryant@DFCI.Harvard.edu

#### **For more information on the Department of Supportive Oncology:**

<https://www.dana-farber.org/cancer-care/treatment/supportive-oncology>

<https://www.dana-farber.org/research/departments-centers/psychosocial-oncology-palliative-care>



# Fred Hutch and UW Medicine's Psychosocial Oncology Program

The Psychosocial Oncology Program at Fred Hutch Cancer Center and UW Medicine is a leader in providing interdisciplinary, evidence-based clinical consultation and treatment. Providers are part of an exceptional program built on the team-based Collaborative Care Model.

We train the next generation of psychosocial and mental health professionals through our psychiatry, psychology and social work training programs. We also have the only ACGME-accredited psycho-oncology/consultation-liaison psychiatry fellowship on the West Coast.

Fred Hutch combines innovative research with compassionate care to address the impact of cancer and infectious disease. We foster a supportive and cooperative environment centered around our shared mission of advancing breakthroughs and saving lives.



**For more information visit**  
[FredHutch.org/supportive-care-services](https://FredHutch.org/supportive-care-services)

**Jesse Fann, MD, MPH**  
Medical Director,  
Department of Psychosocial Oncology, Fred Hutch  
[fann@uw.edu](mailto:fann@uw.edu)

**UW Medicine**  
DEPARTMENT OF PSYCHIATRY  
AND BEHAVIORAL SCIENCES



Comprehensive  
Cancer Center

# Caring for all the needs of patients with cancer



At Mayo Clinic Comprehensive Cancer Center, our multidisciplinary care teams provide support for all the burdens a patient with cancer may face. Our experts focus on improving health outcomes not just by targeting cancer, but by helping patients cope with the stresses associated with their illnesses and treatment plans.

We build this care on a foundation of best evidence science translation, translating the best research into clinical care.

For more information visit [MayoClinic.org](https://www.MayoClinic.org).

# Norton Children's Cancer Institute Resource Center



For more information, scan the **QR code** or visit [NortonChildrens.com/CancerResources](https://NortonChildrens.com/CancerResources).

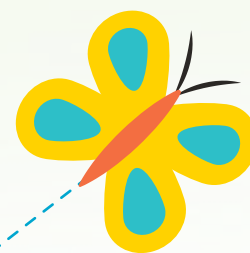


## Support for families every step of the way

A childhood cancer diagnosis changes everything — not just for your child, but for every member of your family. While we're committed to fighting this disease alongside your child, we're equally committed to supporting your entire family through every step of your journey.

Norton Children's Cancer Institute Resource Center is here to help lighten your load. Our dedicated team provides comprehensive support for patients, parents, guardians and siblings. Through a holistic approach to care, we offer:

- Financial navigators
- Nurse navigator
- Educational liaisons
- Psychosocial specialists
- Expressive arts therapists



**NORTON**  
Children's  
Cancer Institute

# Caring for the body, and the **person** within.



A cancer diagnosis affects the entire family. At Norton Cancer Institute, we believe no one needs to face cancer alone. We understand that patients and their families need a level of care that goes beyond treating the disease.

That's why our Comprehensive Support Care includes a specialized team of psychiatric nurse practitioners, licensed clinical social workers, expressive music and art therapists, nurse navigators, nutritionists and massage therapists, as well as support offerings such as education, wigs and more.

Through our Behavioral Oncology Program and the Legacy Lab, a space designated to facilitate proactive, tangible legacy projects with our patients and their families experiencing advanced-stage cancer, we ensure patients have access to resources to ease any undue suffering. We provide abundant opportunities to engage in healing arts, educational and psychosocial support offerings.

For more information, visit [NortonCancerInstitute.com](https://NortonCancerInstitute.com)  
or call **(502) 899-2673**.



# We are proud to be a gold sponsor of APOS 2026!

## Treating more than cancer

Ranked in the top 1% nationwide, The University of Kansas Cancer Center offers unrivaled expertise and experience in diagnosing and treating all forms of cancer. Our team of nationally recognized clinicians understands a patient's well-being is at the heart of every treatment and recovery. That's why we treat beyond the disease. We treat the whole person.

To learn more, visit [KUCancerCenter.org](http://KUCancerCenter.org).



THE UNIVERSITY OF KANSAS  
CANCER CENTER



**RUSH MD Anderson Cancer Center is proud to support the American Psychosocial Oncology Society.**

To learn more about cancer care at RUSH MD Anderson Cancer Center, visit [rush.edu/Cancer](http://rush.edu/Cancer).

 RUSH MD Anderson  
Cancer Center  
Making Cancer History®

# *Expert cancer care, built around you.*

Comprehensive cancer care that supports patients from early detection, to treatment, to survivorship.



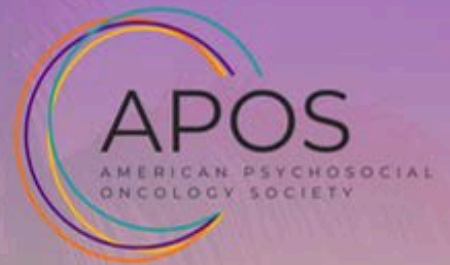
[endeavorhealth.org/cancer](http://endeavorhealth.org/cancer)



# *Save the Date*

# **APOS 2027**

March 17-19, 2027



# SAN DIEGO, CALIFORNIA

# APOS 2026

23rd Annual Conference

March 18 - 20, 2026 | New Orleans Marriott

*New Orleans* 🎵🎶