

*Thank You for Joining Us on this  
Virtual Conference Experience!*

**APOS 17<sup>th</sup> Annual  
Virtual Conference**



**2020 Vision: Defining a  
New Era of Human-Centered  
Cancer Care**



**APOS**

american psychosocial oncology society

*Advancing the science and practice of psychosocial oncology.*

# 2020 VISION

## Defining a New Era of Human-Centered Cancer Care

APOS 17<sup>TH</sup> ANNUAL CONFERENCE • THE 2020 CONFERENCE IS BEING HELD VIRTUALLY!



### A LETTER FROM OUR 2020 CONFERENCE CHAIR

*Lora Thompson, PhD*

Dear Colleagues and Friends,

The 17th American Psychosocial Oncology Society (APOS) Annual Conference was one we will never forget. The APOS Board of Directors, 2020 Program Planning Committee, and staff were looking forward to welcoming each of you to Portland, Oregon in March. The rapidly changing circumstances associated with the Novel Coronavirus (COVID-19) changed those plans. The APOS Board of Directors had to make the incredibly hard decision to cancel the conference. Putting the health and safety of attendees, members, and sponsors was, and will always be, APOS's highest priority. The APOS 2020 Conference Planning Committee rolled up its sleeves and quickly transformed the annual conference into a dynamic virtual experience.

The theme of the 2020 Annual Conference is "2020 Vision: Defining a new Era of Human-Centered Cancer Care". This theme is in keeping with APOS's goal to identify the research, clinical practice, policy and advocacy priorities for the field of psychosocial oncology as we begin a new decade. I have no doubt that you will find the presentations to be informative and insightful. In this virtual program book, you will find information about how to access the recordings (page 9) and how to obtain your continuing education credits (page 13). You will also see a listing of our generous sponsors, our awardees and fellows, and other relevant information.

It has been my privilege to serve as the Conference Chair. I thank my Program Planning Committee, APOS staff, and APOS Board of Directors for their assistance and support over the past year. We especially want to give a big thank you to our 2020 Conference speakers for making the time and effort to record their virtual sessions and to our conference attendees for joining us on this unprecedented journey.

We look forward to hopefully seeing everyone in 2021!

Sincerely,

**Lora Thompson**

**Lora M. A. Thompson, Ph.D.**

Associate Member and Clinical Psychologist, Behavioral Medicine  
Director, Integrative Medicine Service  
Supportive Care Medicine Department  
Moffitt Cancer Center

# WE WENT SOCIAL

While we missed seeing all of your faces at the conference, we so enjoyed reading your tweets and posts on how you loved the virtual conference.

Below were a few of our favorites!

"So excited that I still got to present our Model of Financial Burden After Cancer at #apos2020 virtual conference. Big thanks to @APOSHQ for providing an alternative format to present!"  
@bhaviorscientst

"Wow, @Matthewloscalzi spoke some timely truth on leadership during his #APOS2020 keynote this am." @NALbertsPhD

"Excited to feel so connected to a wonderful group of advocates at #APOS2020! Thankful that we come together, despite our physical distance, and continue to share our passion through a virtual conference." @amyleelyj11

*Follow Us!*





# THANKS TO OUR SPONSORS!



WILEY



BOARD OF  
ONCOLOGY  
SOCIAL WORK



BE SURE TO VISIT OUR CONFERENCE EXHIBITORS!





*The future depends*  
on what you do today.



**APOS**

*Future Fund*

Advancing our field. Building our legacy. Broadening our reach.

The vision of the American Psychosocial Oncology Society is a nation in which all people affected by cancer have access to quality psychosocial care to optimize health outcomes. We are working to fulfill this vision every day. *We invite you to join us on the journey.*

**[WWW.APOS-SOCIETY.ORG/ABOUT-US/MAKE-A-DONATION](http://WWW.APOS-SOCIETY.ORG/ABOUT-US/MAKE-A-DONATION)**

VIEW OUR



STRATEGIC PLAN



**APOS IS GOING PLACES!**



When you make a  
commitment to achieve  
accreditation, you  
make a promise to  
deliver the very best  
care for cancer patients.

When you make  
a commitment to  
excellence, you make  
a promise to patients.

Commit to excellence in cancer care. *Achieve accreditation.*



Learn how your cancer program can become accredited.

312-202-5085 | [acscancerprograms@facs.org](mailto:acscancerprograms@facs.org)

[facs.org/cancer](https://facs.org/cancer)



100+years

AMERICAN COLLEGE OF SURGEONS

Inspiring Quality:  
Highest Standards, Better Outcomes



Board of Oncology  
Social Work  
Certification

## Are you an Oncology Social Worker?

Do you have your Oncology Social Work Certification (OSW-C)?

**If not, now is the time to apply for certification.**

**Join 734 of your colleagues in showing your level of expertise and specialized skill set.**

- This is the preferred certification for the required role of "Psychosocial Coordinator" for the Cancer Committee, which is specified in the Commission on Cancer Standards of Care.
- It represents an advanced level of competence, commitment, experience and best practice in the field of Oncology Social Work.

To see the full list of benefits and requirements, please visit our website: [www.oswcert.org](http://www.oswcert.org)

**Be a catalyst for thought leadership and innovation**

CORPORATE  
COUNCIL



**APOS**  
american psychosocial oncology society

**THANK YOU:**



[www.apos-society.org/about-us/corporate](http://www.apos-society.org/about-us/corporate)



# Conference Recordings

[CLICK HERE](#) to view the Special Issue: Abstracts of the 17<sup>th</sup> American Psychosocial Oncology Society Annual Conference

We want to give a huge thank you to our 2020 Conference Speakers who were able to record their sessions.

We are happy to bring you their science virtually!

You can view the APOS Conference Library [HERE](#) until **June 30, 2020**. You will need to login to your APOS profile to view the recordings. Should you have any issues please email [info@apos-society.org](mailto:info@apos-society.org).

## Live Keynotes & Award Presentations

- ❖ **Live Opening Keynote:** **Matthew Loscalzo, LCSW**  
*Strategically Applying Your Existing Clinical and Research Skills to Leadership: Thinking Like a Program*
- ❖ **Live Plenary Session:** **Anthony Back, MD**  
*COVID-Ready Communication Skills: A Playbook of VitalTalk Tips*
- ❖ **Live Plenary Session:** **Carly Parry, PhD, MSW, MA**  
*Opportunities for Impact: Fostering Innovation at the Intersections of Policy, Practice and Research*
- ❖ **Live Plenary Session:** **Joseph Greer, PhD, Giselle Perez, PhD, & Lynne Padgett, PhD**  
*Virtual Psychosocial Oncology Care & Research*
- ❖ **Presentation of the Holland Distinguished Leadership Award:** **Barbara Given, PhD, RN, FAAN**

## Symposia

- ❖ AYA Training Competencies for the Psychosocial Provider
- ❖ Expanding Human-Centered Cancer Care to Caregivers: Understanding & Promoting Cancer Caregiver Resilience
- ❖ Lions, Tigers, and RVU's: Development of a Psychosocial Oncology Service Model to Better represent the work demands and benefits of psychosocial oncology programs
- ❖ Meaning-Centered Psychotherapy for Populations with Unique Psychosocial Needs Related to Cancer and Service Related Trauma: Veterans & 9/11 First Responders
- ❖ NIH Psychosocial Oncology Funding: The New Ins and Outs
- ❖ Pediatric Psychosocial Standards of Care: Innovative Methods to Reduce Implementation Barriers
- ❖ Providing Large Scale, Patient-Centered Oncology Supportive Care Services: Innovative Clinical, Business, and Digital Health Delivery Models
- ❖ Psychosocial Care for Patients with Brain Tumors
- ❖ Reaching and Teaching: Innovative Approaches for Teaching Psychosocial Oncology across the Career Span
- ❖ Suicide Risk in Patients with Cancer Across the Lifespan
- ❖ Supporting Parents and Families Affected by Advanced cancer: From End-Of-Life Care into Bereavement
- ❖ Through the Caregivers' Eyes: The Creation of Caregiver-Centric Supportive Care Interventions

## Podium Sessions

- ❖ Podium Session: End of Life Care
- ❖ Podium Session: Marijuana and Substance Use in Cancer
- ❖ Podium Session: Program Implementation/Strategic Partnerships
- ❖ Podium Session: Psycho-oncology "Online"
- ❖ Podium Session: Symptom Management
- ❖ Podium Session: The Financial Burden of Cancer and the Value of Supportive Services

*Closing Plenary, Vicki Kennedy, LCSW* [WATCH NOW](#)



## THURSDAY POSTER AWARDEES:

### Research:

*Jesse Fann, MD*

*Patient-Reported Neuropsychiatric Outcomes of Long-Term  
Survivors After Chimeric Antigen Receptor-T Cell Therapy*

### Program:

*Jaret Sellers, LCSW*

*Provider Resilience at the Bedside: Respite Activities  
for Inpatient Pediatric Oncology Nurses*

### Student:

*Maura Barry*

*The Impact of the Bridge Intervention on Community Mental Health Clinicians:  
Person-Centered Care for Patients With Serious Mental Illness and Cancer*

### Clinical:

*Rosara Faria, MS*

*Facilitating Comprehensive, Person-Centered, and Evidence-Based Real Time Symptom  
Management in Cancer Care Across Quebec With Mobile Technology: The e-IMPAQc Project*





## FRIDAY POSTER AWARDEES:

### Research:

*Mollie Canzona, PhD*

*Enhancing Sexual Health Communication Among Survivors, Spouses, and Providers After Breast Cancer Treatment: A Triadic Perspective*

### Student:

*Samantha Scott*

*Adverse Childhood Experiences (ACEs) in Adolescent and Young Adult (AYA) Cancer Patients: A Report From the Promoting Resilience in Stress Management (PRISM) Randomized Controlled Trial*

### Clinical:

*Carina Oltmann, LCSW*

*Reducing No Show Rates in an Outpatient Center for Psychosocial Oncology*

### Program: (TIED)

*Stacy Sanford, PhD*

*Proactive Biopsychosocial Assessment for Young Adults With Cancer: Assessing Need in a Large Adult Based Cancer Center*

*Hinda Goodman, LCSW*

*Volunteers: Bridging the Gap in Psychosocial Care*

# LEARNING OBJECTIVES

## *"2020 Vision: Defining a New Era of Human-Centered Cancer Care"*

**In this annual meeting, APOS aims to increase adoption and reach of the standard of psychosocial care in oncology through the following objectives:**



Define research, practice and training priorities for the field of psychosocial oncology that reflect emerging trends and advancements in cancer care, such as immunotherapy and genomic-driven treatment, implementation science, collaborative care and professional resilience.



Demonstrate how psychosocial oncology researchers, practitioners, advocates, and policy makers can contribute to high-value, human-centered cancer care delivery. Special attention will be given to care needs related to age, race, ethnicity, religion, culture, language, disability, socioeconomic status, sexual orientation, gender identity and/or expression.



Present evidence of cost-effective care demonstrating the value-added that psychosocial oncology professionals provide to overall cancer care.



Describe innovative models of psychosocial oncology care delivery that promote integration and adoption of scientific, evidence-based findings into clinical practice, advocacy and policy. Special attention will be given to models for which education or training can be disseminated to conference attendees.





## MEETING EVALUATION

All meeting attendees are urged to complete an evaluation of the meeting. Attendees who are requesting CE credit for the meeting are required to complete the evaluation. This form is available online only. You may complete the evaluation [HERE](#). All evaluations must be completed by June 30, 2020. Upon completion of the evaluation you will then be directed to attest the sessions you viewed then you will receive your CE via email shortly thereafter.

## CONTINUING EDUCATION AND DISCLOSURES

Attendees will be eligible to receive the credit hours listed below for attending the 17<sup>th</sup> APOS Annual Conference. To obtain CE credits for the conference, you must complete the post-conference meeting evaluation. All disclosures are available at the online at [www.apos-society.org](http://www.apos-society.org). Upon completion of the post-conference evaluation, your CE certificate will be emailed to your email on file with APOS. If you need to receive APA or ASWB credits, you will also have to complete the Education Hours before receiving your certificate.

## SATISFACTORY COMPLETION

Participants must complete an evaluation form to receive a certificate of completion. Your chosen sessions must be attended in their entirety. Partial credit of individual sessions is not available. Once you have completed the online evaluation, you can print your certificate and one is emailed to you. NOTE: If you are seeking continuing education credit for a specialty not listed below, it is your responsibility to contact your licensing/certification board to determine course eligibility for your licensing/certification requirement.

## PHYSICIANS AND NURSES

In support of improving patient care, this activity has been planned and implemented by Amedco LLC and the American Psychosocial Oncology Society (APOS). Amedco LLC is jointly accredited by the Accreditation Council for Continuing Medical Education (ACCME), the Accreditation Council for Pharmacy Education (ACPE), and the American Nurses Credentialing Center (ANCC), to provide continuing education for the healthcare team.

Credit Designation Statement – Amedco LLC designates this live activity for a maximum of 30.75 AMA PRA Category 1 Credits™ for physicians and 30.75 contact hours for nurses. Learners should claim only the credit commensurate with the extent of their participation in the activity.

## PSYCHOLOGISTS

This course is co-sponsored by Amedco and APOS. Amedco is approved by the American Psychological Association to sponsor continuing education for psychologists. Amedco maintains responsibility for this program and its content. Maximum of 30.75 hours.

## SOCIAL WORKERS

As a Jointly Accredited Organization, Amedco is approved to offer social work continuing education by the Association of Social Work Boards (ASWB) Approved Continuing Education (ACE) program. Organizations, not individual courses, are approved under this program. State and provincial regulatory boards have the final authority to determine whether an individual course may be accepted for continuing education credit. Amedco maintains responsibility for this course. Social workers completing this course receive 30.75 continuing education credits.



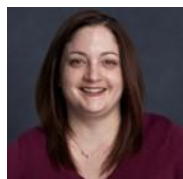
# BOARD OF DIRECTORS



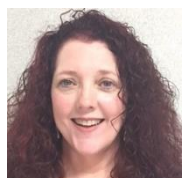
**President**  
**February 2019- March 2020**  
*Victoria Kennedy, LCSW*  
Cullari Communications Global



**Past President**  
**February 2019- March 2020**  
*Teresa Deshields, PhD*  
Rush University Medical



**Secretary**  
**February 2019 – February 2021**  
*Carly Paterson, MPH, PhD, RN*  
Patient-Centered Outcomes Research Institute



**Director of Research**  
**February 2018 - February 2020**  
*Lynn Padgett, PhD, ABPP, FAPOS*  
Washington, D.C. VA Medical Center



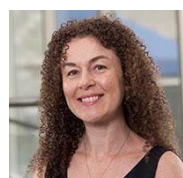
**Director of Professional Education**  
**February 2018 - February 2020**  
*Sharla Wells-Di Gregorio, PhD*  
Ohio State University Wexner Medical Center



**Invited Director, Annual Conference Chair**  
**February 2019 - February 2019**  
*Lora Thompson, PhD*  
H Lee Moffitt Cancer Center & Research Institute



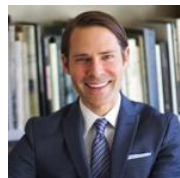
**Invited Director, Federal Liaison**  
**February 2017 – February 2020**  
*Lori Wiener PhD, DCSW, FAPOS*  
National Cancer Institute



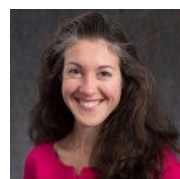
**Director of Development and Strategic Partnerships**  
**June 2018-February 2020**  
*Tammy Schuler, PhD*  
Association for Behavioral and Cognitive Therapies



**President-Elect**  
**February 2019- March 2020**  
*Kristine A. Donovan, PhD, MBA*  
Moffitt Cancer Center



**Treasurer**  
**February 2019 – March 2020**  
*Bryan Miller, MSW, LCSW, OSW-C*  
Atlanta Cancer Care



**Director of Communications**  
**August 2019 - February 2021**  
*Kelly Irwin, MD*  
Massachusetts General Hospital



**Director of Mentoring**  
**August 2019 - February 2021**  
*Giselle Perez, PhD*  
Massachusetts General Hospital



**Director of Membership**  
**March 2018 - February 2020**  
*Yasemin Turkman, PhD, MPH, PMNHP-BC*  
University of Alabama at Birmingham



**Invited Director, American Cancer Society Liaison**  
**February 2018 – February 2020**  
*Rachel Cannady*  
American Cancer Society, Inc



**Invited Director, AOSW Liaison**  
**February 2017 – February 2020**  
*Tara J. Schapmire, PhD, MSSW, CSW, OSW-C, FNAP*  
University of Louisville



**Invited Director, John Wiley & Sons Psycho-Oncology Journal Liaison**  
**October 2018-February 2020**  
*William Pirl, MD, MPH*  
Dana-Farber Cancer Institute



# Thank You!

## APOS 2020 PROGRAM COMMITTEE

### 2020 CONFERENCE CHAIR

**Lora Thompson, PhD**

*Moffitt Cancer Center*

### 2020 COMMITTEE MEMBERS

**Yasmin Asvat, PhD**

*University of Chicago*

**Nicole Taylor PhD**

*University of Denver*

**Jeffrey Kendall, PsyD**

*M Health Fairview Oncology*

**Lori Wiener, PhD**

*National Cancer Institute*

**Rachel Cannady**

*American Cancer Society*

**Sharla Wells-Di Gregorio, PhD**

*The Ohio State University*

**Bryan Miller, LCSW**

*Atlanta Cancer Care affiliated with  
Northside Hospital*

**Cheryl Krauter, MA**

*Private Practice Psychotherapist*

**Hannah Katz, PsyD**

*University of Kansas Medical Center*

**Joel Marcus, PsyD**

*Banner Health Care*

**Patrick Meadors, PhD**

*Levine Cancer Institute*

**Krista Nelson, LCSW, MSW**

*Providence Cancer Institute*

**Carly Paterson, MPH, PhD, RN**

*Patient-Centered Outcomes Research Institute*

**Yasemin Turkman, PhD, RN**

*Region Ten*

**Tammy Schuler, PhD**

*Fred Hutchinson Cancer Research Center*

**Judith Lee Smith, PhD**

*Centers for Disease Control and Prevention*

**Elizabeth Muenks, PhD**

*The University of Kansas Cancer Center*

**Amanda Kracen, PhD**

*Webster University*

# Congratulations

## THE HOLLAND DISTINGUISHED LEADERSHIP AWARD

*BARBARA GIVEN, PHD, RN, FAPOS*



Dr. Barbara Given has a distinguished research career focusing on the relationship between the formal health care system & the informal care system of patients and their families who must implement care for chronic disease and cancer. Her research was funded by NIH for over 30 years; she received her first R01 grant from NIH in 1986. She has received funding and support through the years from: National Cancer Institute, National Institute on Mental Health, National Institute for Nursing Research, National Institute on Aging, Walther Cancer Institute, Michigan Department of Community Health, and the American Cancer Society.

One of Dr. Given's early research impacts is the Caregiver Burden Instrument that enables the evaluation of the burden that caring for a loved one has on an individual so that steps can be taken to improve their quality of life and the care they are providing. This research rose out of the recognition that there was a reduction in lengths of stays in hospitals and that the treatment in outpatient ambulatory care settings shifted ongoing and supportive cancer care responsibilities to patients and their families. The reaction of family members to providing the care needed to be better described and understood. The Caregiver Burden instrument remains in use both in research and among agencies documenting caregiver involvement in assisting their patients. It has been translated into many languages including: Dutch, German, Japanese, Chinese, Tai, Spanish, and Hebrew.

Dr. Given's areas of investigation in cancer include: interventions, symptom management (RCT's), the role of family caregivers, and adherence with oral cancer medication. Her research has employed technology (automated phone calls) as well as nurses to help patients and their family members to manage their symptoms of the disease and treatment. Her research team developed the Symptom Management Toolkit (Toolkit), an evidence based guide of self-care strategies to assist patients to manage their cancer and cancer treatment symptoms side effects. The Toolkit is organized according to 'frequently asked questions'. Research found that patients using the Toolkit were able to manage their symptoms and thus able to continue their treatment and experience a better quality of life. It has been used by other researchers in their trials. Anthem has adapted it to a smartphone app for use in their Community Cancer Outreach and their Cancer Survivorship programs.

Dr. Given believes in giving back to the science and as such she has mentored many doctoral students and junior faculty. She has disseminated her work in over 310 journal articles, two books, and 66 book chapters. Dr. Given is a reviewer for numerous professional journals. She served on the Editorial Boards for *Cancer Nursing*, *European Journal of Cancer Nursing*, *Research in Nursing and Health*, and *Western Journal of Nursing*.

She regularly served as a grant reviewer; serving on grant review panels for: National Institutes of Health, National Cancer Institute, NINR, Department of Defense, National Institute of Aging, and the American Cancer Society. Dr. Given is one of the charter members of the Midwest Nursing Research Society, and the Oncology Nursing Society. She was also one of the founders of the Behavioral Cooperative Oncology Group (BCOG) funded by the Walther Cancer Foundation.

Dr. Given has received many honors over her career including: Friends of the National Institute for Nursing Research Pathfinder Distinguished Researcher Award (2001), Oncology Nursing Society (ONS) Distinguished Service Award (2006), Sparrow Nurses Lifetime Achievement Award (2013), Council for the Advancement of Nursing Science (CANS) Outstanding Nurse Scientist Award (2016), American Psychosocial Oncology Society Fellow (2017), Friends of the National Institute of Nursing Research (FNINR) Ada Sue Hinshaw Award (2017), and most recently the 2019 American Cancer Society Trish Greene Quality of Life Award and the 2019 MNRS Lifetime Achievement Award.

Dr. Given is working with the AARP at the national level to ensure that family members are included in hospital discharge instructions as part of the CARE Act currently enacted in 43 states and territories. Dr. Given serves on the Sparrow Hospital Governing Board where she just ended her service as Chair. Prior to serving on the Sparrow Hospital Governing Board she was the Chair of the Sparrow Health System Board.

She is currently the Interim Associate Dean for Research and the PhD Program in the College of Nursing, and a University Distinguished Professor.



# THE RUTH MCCORKLE RESEARCH MENTORSHIP AWARD

*JOSEPH GREER, PHD, FAPOS*



Dr. Joseph Greer is the Program Director of the Center for Psychiatric Oncology & Behavioral Sciences and the Associate Director of the Cancer Outcomes Research Program at the Massachusetts General Hospital Cancer Center. He is also an Assistant Professor of Psychology at Harvard Medical School.

Dr. Greer's research focuses on the development and testing of supportive care interventions for patients with cancer. As the principal investigator and collaborator on numerous grant-funded projects, he is studying the application of cognitive-behavioral therapy (CBT) to treat anxiety in patients with cancer; nurse-delivered behavioral interventions to improve breathlessness in patients with lung cancer; the use of mobile technology to promote symptom management and adherence to oral chemotherapy medications; and the benefits of early palliative care integrated with standard oncology care. Dr. Greer has published over 85 scholarly papers, reviews, chapters, and commentaries related to this work. He has received funding from the National Institutes of Health, American Cancer Society, Patient Centered Outcomes Research Institute, and philanthropic donations. Dr. Greer's program of research is greatly informed by his clinical practice at the MGH Cancer Center where he provides CBT for patients and their families.

*In Loving Memory*

**The late Dr. Ruth McCorkle spent her life giving. Thus, she has taught us to give.**



A pioneer in oncology nursing, the late Dr. McCorkle joined the faculty at the University of Washington in 1975 where her commitment to multidisciplinary, holistic care for cancer patients took root. She continued her work at the University of Pennsylvania's School of Nursing where she was the first nurse voted to be a full professor without term, and later at the Yale Comprehensive Cancer Center where she was director of Psychosocial Oncology and Florence S. Wald Professor and Director of the Doctoral Program for the Yale School of Nursing. Dr. McCorkle was also informed by his clinical practice at the MGH Cancer Center where he provides CBT for patients and their families.

Dr. McCorkle was an international leader in cancer care, education, and research, and had led landmark work on the psychosocial ramifications of cancer. She was a charter member and served on the boards of Oncology Nursing Society, the International Society of Nurses in Cancer Care, and The American Psychosocial Oncology Society. She served on the National Cancer Institute and National Institute of Nursing Research study sections and was the first non-medical recipient of an NCI Institutional Research Training Grant, which opened the door for others to secure competitive research funding.

Dr. McCorkle was elected to the Institute of Medicine (now the National Academy of Medicine) in 1990 and received numerous awards including the Book of the Year Award for Cancer Nursing from the American Journal of Nursing, a Distinguished Merit Award from the International Society of Nurses in Cancer Care, Yale Cancer Center's Lifetime Achievement Award, The Academy of Nursing's Living Legend Award, and she was named Nurse Scientist of the Year by the American Nurses Association Council of Nurse Researchers, one of the most coveted awards in the field of nursing. Over her distinguished career, she has mentored over 70 doctoral students and 30 post-doctoral fellows.

Truly, there is no way to measure the impact Ruth has made on the lives of patients with cancer, their care providers, and her scientific mentees in the field of psychosocial oncology.

# OUTSTANDING CLINICAL CARE AWARD

## REGINA MELCHOR, PSYD



Dr. Regina Melchor is a bilingual, licensed, fellowship-trained clinical psychologist who actively incorporates the continuity of care perspective by providing outpatient and in-patient consultation/liaison evaluations with evidence-based psychotherapeutic encounters throughout the cancer trajectory. Aside from integrating translational research into her clinical practice, she also provides psychoeducation for patients about their specific cancer while addressing their emotional/psychiatric needs. In her current position at Mount Sinai Comprehensive Cancer Center in Miami, she works in very close collaboration with oncologists, radiologists, surgeons, the entire health care team, as well as the patient's family.

Dr. Melchor earned her undergraduate degree at the University of Miami, her graduate degrees at Albizu University and she completed a two-year Clinical Fellowship in adult and pediatric Psycho-Oncology and Consultation/Liaison Psychiatry and Psychosomatic Medicine at Memorial Sloan-Kettering Cancer Center/Weill Cornell Medical School. As a twenty-five year academic, she has taught courses in both medical and psychology schools in the US and abroad, presenting in-service trainings, Tumor Boards and Grand Rounds on topics such as pediatric and adult palliative care. She has chaired accreditation committees, served on the APOS 2012 steering committee, and helped shape health psychology and psycho-oncology programs/units, and practicum sites in the US and Puerto Rico. In past leadership roles in academia, she has served as department director and has contributed to program design, development and evaluation of PhD human services, PsyD clinical and health psychology, and family medicine resident programs in a supervisory role. In hospital and hospice settings, she has served on bioethics, quality assurance committees, and on several Disease Management Teams for adult and pediatric psycho-oncology services.

Dr. Melchor is past President of the Medical Psychology Division of the Florida Psychological Association (FPA), and past President/Continuing Education Chair for the North Central Florida Chapter of FPA. She has also served on the professional advisory board at the Cancer Support Community of Greater Miami.

Dr. Melchor believes her clinical role with patients to be the most important. Throughout the years, she has focused on a *developmental psycho-oncology* model of care. Like the pediatric approach, it allows therapeutic family sessions especially at the end of life to be meaningful encounters, which often transcend individual interventions. In her role as a clinician, she has provided guidance to patients and families leading to policy changes. She has provided innovative, integrative and cohesive supportive care services, where she has gathered health care teams, patients and families to discuss difficult and often taboo topics. As part of the Cancer Committee at the Mount Sinai Comprehensive Cancer Center, she is involved in conducting regular needs assessments in the immediate multicultural communities to help address barriers, disparities and cancer program goals. In so doing, she is also actively involved in the quality improvement initiative implementing standards in the areas of survivorship and distress pursuant to the Commission on Cancer and CoC Special Studies.

# OUTSTANDING EDUCATION AND TRAINING AWARDS

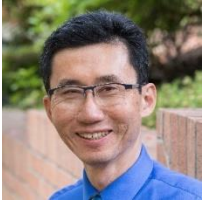
## TERESA DESHIELDS, PHD, ABPP, FAPOS



Dr. Teresa Deshields is a licensed clinical psychologist, Director of Supportive Oncology at Rush University Cancer Center, and a Professor in the Department of Psychiatry and Behavioral Sciences at Rush University School of Medicine in Chicago. She is a Fellow of the American Psychosocial Oncology Society and its current Past-President. Her clinical practice is devoted to treating cancer patients and survivors and their family members, throughout the cancer continuum – diagnosis, treatment, survivorship, end of life,

and grief. Her research is focused on issues related to symptom burden and quality of life in cancer patients and survivors. She has trained future psychologists at the practicum, internship, and fellowship level. She has also participated in the education of other health professionals, including future physicians and nurses, in addition to social workers and chaplains.

## JESSE FANN, MD



Dr. Jesse Fann is Medical Director of Psychiatry and Psychology and Director of the Integrated Psychosocial Oncology Program at the Seattle Cancer Care Alliance (SCCA). He is an Affiliate Investigator in Clinical Research at Fred Hutchinson Cancer Research Center.

Dr. Fann is a Professor in the Department of Psychiatry and Behavioral Sciences' Division of Population Health and Adjunct Professor in the Departments of Rehabilitation Medicine and Epidemiology at the University of Washington. He received his BS in Electrical Engineering from Stanford University, his MD from Northwestern University, and his MPH in Epidemiology from the University of Washington.

Dr. Fann's research has focused on psychiatric epidemiology and development of cost-effective strategies to identify and manage behavioral and psychiatric issues in people with cancer and other medical conditions. Over the past decade, he has dedicated his efforts on researching, implementing, and disseminating integrated psychosocial programs in diverse oncology settings. His research has been funded by NIH, PCORI, CDC, American Cancer Society and Department of Education.

## 2020 NEW INVESTIGATOR AWARD

## JAMIE JACOBS, PHD



Dr. Jacobs is an Assistant Professor in the Department of Psychiatry at Harvard Medical School and a Clinical Psychologist at the Massachusetts General Hospital (MGH) Cancer Center. She is the Director of Caregiver Research in the MGH Cancer Outcomes Research & Education program. Dr. Jacobs's work focuses on improving the emotional, physical, and treatment-related outcomes of patients with cancer and the individuals who care for them through novel therapeutic approaches that are accessible and scalable.

Dr. Jacobs's research program encompasses both patient-centered research focused on adherence to treatment and symptom management, as well as caregiver-centered research focused on anxiety and coping. Dr. Jacobs is currently funded by the National Cancer Institute to develop and test a brief, virtual, group-based intervention to improve side effect management, reduce distress, and enhance adherence to adjuvant endocrine therapy for patients after breast cancer. With her oncology collaborators, and funding from the American Society of Clinical Oncology's Conquer Cancer Foundation, she developed and is investigating a brief, virtual, evidence-based intervention to reduce anxiety for individuals caring for patients with malignant gliomas. Her emerging work is translating an in-person coping skills intervention to a gamified app-based intervention for individuals caring for patients during a hematopoietic stem cell transplantation. As a clinician-scientist, Dr. Jacobs actively engages with collaborators across disciplines, as well as patients and family stakeholders, to optimize the human-centeredness and impact of this work.



# *Congratulations*

## *APOS Fellows Class of 2020*

### CHRISTINA POZO-KADERMAN, PHD



**Cristina Pozo-Kaderman, PhD**  
Director, Clinical Operations  
Sylvester Cancer Center

Cristina Pozo-Kaderman, Ph.D. is the Director of Clinical Operations for Cancer Support Services at Sylvester Cancer Center and Voluntary Faculty in the Department of Psychiatry and Behavioral Sciences at the University of Miami for the past 3 years. She obtained her doctorate in clinical psychology from the University of Miami. She completed her internship at Cornell Medical College, Payne Whitney Clinic and her fellowship in psycho-oncology at Memorial Sloan Kettering Cancer Center. She was at the Mount Sinai Cancer Center on Miami Beach for 22 years. She is a clinical psychologist & certified sex therapist for oncology patients.

During graduate school she was awarded the Patricia Roberts Harris fellowship for minorities and women which provided support for her doctoral training and allowed her to develop her own research study for her Master's and doctoral dissertation. She designed a longitudinal study following women from diagnosis to one year post treatment and women were assessed at 5 time periods with a combination of interview and standardized measures looking at coping strategies, social support, and marital satisfaction. This research study served a pilot project for grant application and award from ACS to look at how minority women adjust to a breast cancer diagnosis.

Dr. Pozo-Kaderman's dream came true when she was accepted to MSKCC fellowship in psycho-oncology and she had the opportunity to work with Jimmie Holland, Paul Jacobsen, Steve Passik, Bill Redd, Lynna Lesko, and Bill Breitbart.

After returning from MSKCC, Dr. Pozo-Kaderman spent a year at the Sylvester Cancer Center as faculty in Psychiatry and helped establish the first psycho-oncology program at Sylvester. She was then offered the opportunity to create and develop the psychosocial program for south Florida for Salick Healthcare, which strongly supported psychosocial services (social work, psychological, psychiatric, nutritional, and palliative) being offered to all cancer patients and families. Her career at this point shifted and became more clinical care and administrative, but she continued to supervise clinically for a year-long practicum doctoral student from the University of Miami clinical health program, lecture on psychosocial oncology, and serve on dissertation committees. She has been actively involved in the community making presentations on psychosocial oncology issues, actively involved in Komen Kids, was on the founding board for the Cancer Support Community in Miami, and serve(s) as a local resource while keeping a busy clinical psycho-oncology practice and seeing oncology sex therapy cases. Most recently Dr. Pozo-Kaderman has been back at the University of Miami, Sylvester Cancer Center where she has administratively worked to develop and grow across the main campus and 7 satellites Cancer Support Services where patients receive free of charge music and art therapy, massage, exercise physiology, yoga, pet therapy, chaplaincy and spiritual counseling, patient resource centers, and volunteers. In addition, she oversees services requiring insurance such psychology, psychiatry, and acupuncture, while continuing to clinically see patients and supervise psychology doctoral students. She has now developed a year-long program for nurses to help cope with compassion fatigue. She continues to be actively involved in community programs.



# KAREN KAYSER, MSW, PHD



**Karen Kayser, MSW, PhD**

Professor

University of Louisville

Dr. Karen Kayser holds the Dr. LaRocca Chair in Oncology Social Work at the University of Louisville, Kent School of Social Work. She earned an interdisciplinary PhD in Social Work and Psychology from the University of Michigan. Upon completing her PhD, she worked as an NICHD Post-doctoral Fellow on a clinical research with families coping with childhood cancer. This experience inspired her to pursue her career in psychosocial oncology with a particular focus on studying cancer within the context of families and intimate relationships.

After her post-doc, Dr. Kayser was offered an Assistant Professor position at the Graduate School of Social Work at Boston College where she taught and conducted research for the next 20 years. During her years in Boston, her research agenda focused on studying the interpersonal and cultural factors that impact adjustment to cancer. She developed a couple-based intervention for breast cancer patients (Partners in Coping) and conducted a randomized controlled trial at Dana-Farber Cancer Institute and Massachusetts General Hospital. She disseminated the Partners in Coping treatment protocol in the book *Helping Couples Cope with Women's Cancers: An evidence-based approach for practitioners* (co-authored with Dr. Jennifer Scott; Springer, 2008).

In 2011, Dr. Kayser left Boston College to become the inaugural Endowed Chair in Oncology Social Work at the University of Louisville (UofL). As the Dr. LaRocca Chair, she has developed innovative educational and research programs with the goal of building the workforce capacity to provide evidence-based psychosocial oncology services. Nationally, she established the first program in Psychosocial Oncology in a graduate school of social work. Her clinical research has focused on improving the delivery of distress screening and management services in cancer care. She collaborated with Dr. Brad Zebrack and the Association of Oncology Social Work on A Project to Assure Quality Cancer Care (APAQCC) and the Patient-Centered Research Collaborative (PCRC). Her current research focuses on the promotion of cervical cancer screening and the HPV vaccination in rural Kentucky where rates of HPV-related cancers are among the highest in the nation. Dr. Kayser also serves as the Editor-in-Chief of the *Journal of Psychosocial Oncology*.

During her career, Dr. Kayser expanded her work internationally by developing a network of researchers in Europe and North America who were working in the area of couples and coping (dyadic coping). Along with her European colleagues, she organized six international conferences on stress and dyadic coping. The outcome of one of these meetings was the book, *Couples Coping with Stress: Emerging Perspectives on Dyadic Coping* (co-edited with Revenson & Bodenmann, 2005).

Her international work also includes two Fulbright fellowships that took her to Milan, Italy (2008) and Chennai, India (2018). The most recent fellowship was hosted by the Chennai Cancer Institute (WIA) and focused on building the clinical research capacity in psycho-oncology at the Institute.

# ANNA MURIEL, MD, MPH



**Anna Muriel, MD, MPH**

Child Psychiatrist &  
Chief of the Division of Pediatric  
Psychosocial Oncology  
Dana-Farber Cancer Institute

Dr. Anna (Nina) Muriel is a Child Psychiatrist and Chief of the Division of Pediatric Psychosocial Oncology at the Dana-Farber Cancer Institute (DFCI). After Adult and Child Psychiatry training at Massachusetts General and McLean Hospitals, she worked in the Marjorie E. Korff Parenting at a Challenging Time Program at MGH providing care to adults with cancer and their families. She developed the Parenting Concerns Questionnaire to measure the concerns of parents with cancer and co-authored the book "Raising an Emotionally Healthy Child When a Parent is Sick."

Her more recent work has been in Pediatric Psycho-social Oncology leading a multi-disciplinary clinical team at DFCI and participating in the development of the National Standards of Psychosocial Care for Children with Cancer. She has also explored the intersection between psychiatry and palliative care and psychopharmacology in pediatric oncology. She is Assistant Professor of Psychiatry at Harvard Medical School, and co-edited "Pediatric Psychosocial Oncology: Textbook for Multidisciplinary Care."

# SHARLA WELLS-DI GREGORIO, PHD



**Sharla Wells-Di Gregorio, PhD**

Assistant Professor of Internal  
Medicine, Psychiatry & Psychology  
James Cancer Hospital

Sharla Wells-Di Gregorio is an Assistant Professor of Internal Medicine, Division of Palliative Medicine at The Ohio State Wexner Medical Center Arthur G. James Cancer Hospital where she provides clinical psychology services for Psychosocial Oncology and Palliative Medicine. Dr. Wells-Di Gregorio completed her Ph.D. in clinical psychology at Northwestern University Medical School, a pre-doctoral internship at UCLA, and a postdoctoral fellowship in Biobehavioral Oncology at Ohio State. Her early research focused on the psychological and immune impact of caregiver stress for men whose wives had recurrent breast cancer. In 2005, she began her position with the palliative medicine team at OSU where she works primarily with patients and families with advanced cancer and at the end of life. Her research focuses on translation and empirical validation of psychological multi-symptom interventions, evaluation of psychosocial oncology models of care, and studies to improve oncology communication, particularly for patients with serious illness. In her role at Ohio State, she developed a two-year Psychosocial Oncology and Palliative Medicine Fellowship Program to train clinical psychologists to provide evidence-based psychological and symptom management care for cancer patients. She chaired the multi-disciplinary committee at the James Cancer Hospital to validate a distress measure, the James Supportive Care Screening, to identify patients' most common and distressing comprehensive oncology concerns and connect them with Supportive Care Services. She has served as Director of Professional Education for the American Psychosocial Oncology Society (2017-2022) for which she oversees a national committee of 20 individuals responsible for the education and training of psychologists, nurses, psychiatrists, and social workers. The current focus of this committee's work is creation and assessment of an Online Psychosocial Oncology Core Curriculum and establishment of productivity benchmarks for the field of psychosocial oncology.

# GWEN WYATT, PHD, RN



**Gwen Wyatt, PhD, RN**

Professor, College of Nursing  
Michigan State University

Over the past 30+ years Dr. Gwen Wyatt pursued psychosocial oncology with a continuously funded program of research. She is a full professor in the College of Nursing at Michigan State University (MSU). Her research focuses on reducing symptoms and improving the quality of life of cancer patients, and, more recently, their informal caregivers. She has served as PI on nine completed studies focusing on psychosocial oncology. Specific interest areas include end of life care, integrative therapies and the economics of incorporating integrative therapies into mainstream health care. Her research of complementary therapies has evaluated acupuncture, meditation, imagery, therapeutic touch, reminiscence therapy and reflexology. Her nurse-designed interventions for symptom management in the home address the shift in care from hospital to clinic to home. Findings from her work on supportive cancer care have been consistently disseminated nationally and internationally through publications and presentations.





# APOS

american psychosocial oncology society

## MENTORING PROGRAM

### Strategic Matching to Provide:

Training • Motivation • Advice • Success • Goals •  
Support • Coaching • Direction • Connections

#### Accepting Mentors & Mentees:

[apos-society.org/early-career/apos-mentoring-program](https://apos-society.org/early-career/apos-mentoring-program)





The APOS Webinar series has covered a diverse range of topic areas, including funding for psychosocial programs, Acceptance & Commitment Therapy with cancer patients, anti-depressant medication use in cancer patients, and understanding and supporting grief across the cancer trajectory, just to name a few. Webinar recordings are available for download (free to APOS members!) or for purchase by non-APOS members.

## **Webinar and Webinar Recording without CE's**

APOS Members – No cost | Non-Members – \$45/each

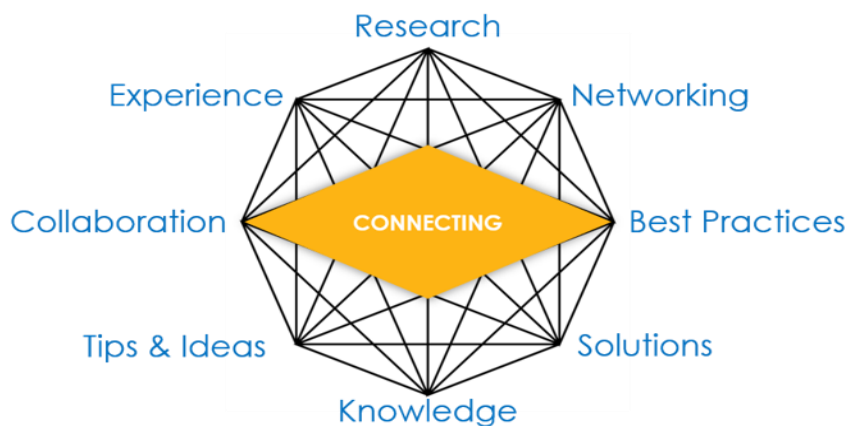
## **Webinar and Webinar Recording with CE's**

APOS Members – \$40 | Non-Members – \$90/each



# SIGs

(Special Interest Groups)



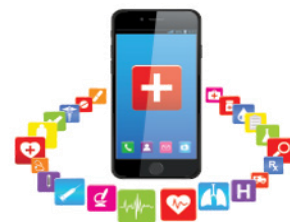
**Attention APOS Members! Did you know that APOS has an array of Special Interest Groups to help connect you with other like-minded APOS members? Build your collaborative network by signing up for a SIG group today!**



**Bereavement**



**Cancer Caregiver**



**E-Health**



**Health Equity and Cultural Diversity**



**Integrative Health**



**Sexual and Reproductive Health**



**Psychiatric Oncology**



**Spirituality**



**Pediatrics**





# Get INVOLVED

## Join a Committee!



**Mentorship**



**Communications**



**Membership**



**Professional  
Education**



**Research**



**Conference  
Program**

**APOS has many thriving committees seeking volunteers!  
Do you want to make a difference with the field of  
psychosocial oncology and APOS?**

**This is the place to start!**

**Email [info@apos-society.org](mailto:info@apos-society.org) with your interest today!**

# Called to Care

## **PEDIATRIC PSYCHO-ONCOLOGY/HEALTH PSYCHOLOGY OPPORTUNITY AVAILABLE AT ROGER MARIS CANCER CENTER**

Sanford Health Roger Maris Cancer Center located in Fargo, ND is seeking a Pediatric Psycho-oncology or Health Psychology Post-doctoral trained provider to join a well-established & growing practice.

Psychologists at Sanford Health are a valued part of our care team and integral in our comprehensive care model. We are looking for candidates who want to be a part of a team that is growing our efforts to develop specialty care programming for the patients and families we serve. This is a great practice opportunity for a self-driven psychologist with leadership goals wanting to make their mark in developing and enhancing programs with support from a collegial interdisciplinary team.

### **Requirements:**

- **A doctoral degree from an American Psychological Association-accredited graduate program**
- **An APA-accredited internship**
- **Post-doctoral training in Health or Psych-Oncology**

### **Practice Details:**

- Position will consist of Clinical, Research and Administrative time
- Join a Psycho-oncology team consisting of 1 Psychologist, 4 MSW's, 1 LICSW and a Pediatric Oncology/Hematology team consisting of 3 Physicians, 2 Nurse Practitioners and a dedicated nurse navigator
- Well established and growing practice
- In-patient and Out-patient coverage
- No Call requirement
- Opportunity to grow services and develop programs

**Sanford's Roger Maris Cancer Center** nationally recognized for its innovative programs, highly trained staff and research in cancer care:

- Roger Maris Cancer Center team consists of 14 Medical Oncologists/Hematologists, 3 Pediatric Oncologists/Hematologist, 5 Radiation Oncologists, 9 Advanced Practice Providers, 1 Psychologist, 4 MSW's & 1 LICSW
- Sanford's cancer team provides comprehensive cancer care including chemotherapy, radiation therapy, financial counseling, psychological support, nutritional support, family counseling, infusion services and palliative care
- Recipient of the Commission on Cancer Outstanding Award from the American College of Surgeons
- Program accredited by the American College of Surgeons on Cancer since 1940
- Sanford's Breast Center was one of the first 50 in the country to achieve the NAPBC (National Accreditation Program for Breast Centers)
- Recently achieved the Certified Quality Breast Center of Excellence designation through the NQMCB (National Quality Measure for Breast Cancer)
- Sanford's team of 21 nurse navigators, including a dedicated pediatric specialist, provide navigation support for multiple cancer sites including hematology
- The cancer center actively participates in research as a member of NCORP (NCI Community Oncology Research Program)
- In addition, Sanford has a familial cancer program, risk assessment clinic, and survivorship program.
- Hematology/Oncology hospitalist service covers most inpatient admissions
- Sanford Health offers the opportunity to teach University of North Dakota medical students and internal medicine residents

Sanford Health offers a competitive salary and comprehensive benefits along with paid malpractice insurance, relocation allowance and much more.

To learn more about Sanford Health and this excellent practice opportunity contact:

Patty Absey, Manager-Physician Recruiting  
Sanford Health Physician Recruitment Office  
PO Box 2010 Fargo, ND 58122-2181  
Phone: (701) 234-6539  
Email: [patricia.absey@sanfordhealth.org](mailto:patricia.absey@sanfordhealth.org)



Learn more about Sanford Health physician opportunities at [practice.sanfordhealth.org](http://practice.sanfordhealth.org).



**CALL FOR PAPERS**

**SPECIAL ISSUE**

# **INCREASING ACCESS TO PSYCHOSOCIAL CARE**

SUBMIT NOW TO PSYCHO-ONCOLOGY



**Psycho-Oncology**

**Journal of the Psychological, Social and  
Behavioral Dimensions of Cancer**

**WILEY**



**See you in HOUSTON! March 10-12, 2021**

